



The New Terios

Life is full of surprises just waiting to catch you out. The unexpected trip. The DIY necessities. The golf club invitation. You have to pick up the children. The weather turns nasty. Roads get slippery. But whatever the surprise, you won't be caught out with the new Terios. Compact on the outside but with an interior the size of a bigger 4x4, the Terios can cope with whatever life has to offer.

The unexpected trip – with its superb ride and handling, comfortable seats, air conditioning, integral RDS radio and single CD player, you can just relax and enjoy the journey.

The DIY necessities – the versatile split folding rear seat configuration caters for pretty much any home improvement project.

The golf club invitation – the new Terios will carry you and four friends, plus four golf bags in the luggage compartment.

You have to pick up the children – the new Terios has 5 seats with amazing legroom for the rear seat passengers.

The weather turns nasty – the higher driving position gives you better visibility for safer driving.

Roads get slippery – with permanent 4WD the new Terios will take any road conditions in its stride.

With the new Terios you are prepared for anything.

So, if you've ever wanted a 4x4, but were worried about high running costs, poor manoeuvrability or environmental issues, your dreams have come true. The new Terios gives you the style, practicality and assuredness of a 4x4 with none of the downsides.

Established in Japan since 1907, Daihatsu has drawn on the latest thinking in research and advanced technology in creating the new Terios, and you can rest assured that it is more than capable of coping with any surprises that come your way.



Terios SX





Terios SX

Exterior Style

Whilst reflecting traditional 4x4 styling the clean, simple lines of the new Terios ensure that it looks at home in the city as it does in the country. This versatile 4x4 packs a powerful 1.5 litre petrol engine, has superlative ride and handling qualities, plus a compact body with an interior of a bigger 4x4. There are three models to choose from – the Terios S, SX and SE Automatic – each of which has its own distinctive styling.

Compact size

Although compact in overall length, the wheelbase on the new Terios is roughly the same as its bigger competitors. This, together with its short overhangs and small engine compartment, results in the largest possible interior space in the smallest possible body.

The design has several other key benefits too. The long wheelbase ensures that the ride is smooth and gives extra stability. Surprisingly, its overall length is shorter than that of a Golf, whilst the small turning circle is better than that of the Clio. And yet the interior space is equal to its bigger competitors.

Want to take the Terios off-road? The short overhangs also give bigger approach and departure angles making light work of arduous terrain and inflicting less damage to bumpers.

Rear doors

The rear doors open wide, allowing passengers to get in and out safely and with ease – even when holding a child. Opening increments of 41 degrees, 60 degrees and 77 degrees also help make access and exit easier in tight spaces.

Luggage compartment

The benefit of having the spare wheel mounted on the back door is that the floor height of the luggage compartment is kept as low as possible making loading and unloading the shopping so much easier. Thoughtful design has prevented the spare wheel from obscuring visibility through the rear window.

Brighter headlamps

Both the SX and the SE have multi-reflector quad headlamps that focus the light to increase the lighting range distance on low beam without dazzling oncoming drivers. The Terios S has dual-lamp headlamps but with multi-reflectors incorporated to give increased brightness. To ensure maximum visibility in poor weather conditions, the SX and SE Automatic also have front fog lamps.

Reverse parking sensors

Every Terios is equipped with reverse parking sensors. Combine these with its amazing manoeuvrability, compact size and good visibility, and parking becomes a pleasure.

Door mirrors

All models have electric door mirrors, whilst the SX and SE Automatic have the added luxury of body coloured heated electric door mirrors ready to cope with the hardest of frosts.

Roof rails

Additional luggage can be stored on the roof if necessary. Both the SX and SE Automatic have roof rails that allow for the easy attachment of a roof luggage carrier.



Height above ground of luggage compartment floor



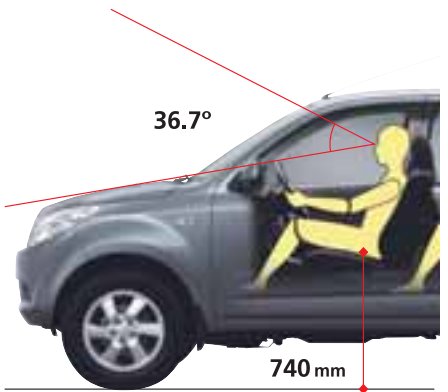
Approach and departure angles

Min. turning circle:

9.8m*
(kerb to kerb)



*Terios SX: 10.0m (kerb to kerb)



Outstanding visibility thanks to the

Interior Equipment

Just settle down in the driver's seat. Look at that panoramic view of the world that the high seating position gives you. With this enhanced visibility, you have more time to react and take control.

Adjust the driver's seat to exactly the right angle to get a comfortable position for your arms and legs. Pump the height adjuster to get really comfortable and then raise or lower the steering column to finalise your driving position to the most comfortable possible. Now adjust the height of the front safety belt for comfort and safety and you are finished. Now you have control.

One look tells you that the interior is short of nothing.

The instrument panel combines good looks with functional practicality. The integral flush-fitting RDS radio with single CD player is easy to operate, thanks to large user-friendly controls.

Three large push-and-rotate control knobs for the air conditioning and ventilation, fan and temperature make controlling the climate in the cabin easy.

The instrument cluster, divided into three segments, houses the tachometer, speedometer and fuel gauge. An unusual feature is that the instrument panel has edge lighting so that it is always illuminated whether the headlights are on or off. This means that when going through dark tunnels or heavy shadow your instruments are always

easy to read. When the sidelights or headlights are turned on, an indicator is illuminated in the instrument panel to remind you that the lights are on.

Both the SX and SE Automatic have a multi-information display whereby, with a single button, the driver can monitor time, average fuel consumption, current fuel consumption, outside temperature, altitude and the maximum travelling range possible on remaining fuel.

The SX and SE Automatic not only sport heated door mirrors but, under the steering wheel, you'll find a button for the electric windscreen de-icer for those really frosty days.

A leather covered steering wheel and gear knob on the SX and SE Automatic give that extra feeling of luxury.

The Terios is equipped with a 12v power supply in the front console, while both the SX and SE Automatic also have a 12v power supply in the luggage compartment.



Current fuel consumption



Average fuel consumption



Fuel range

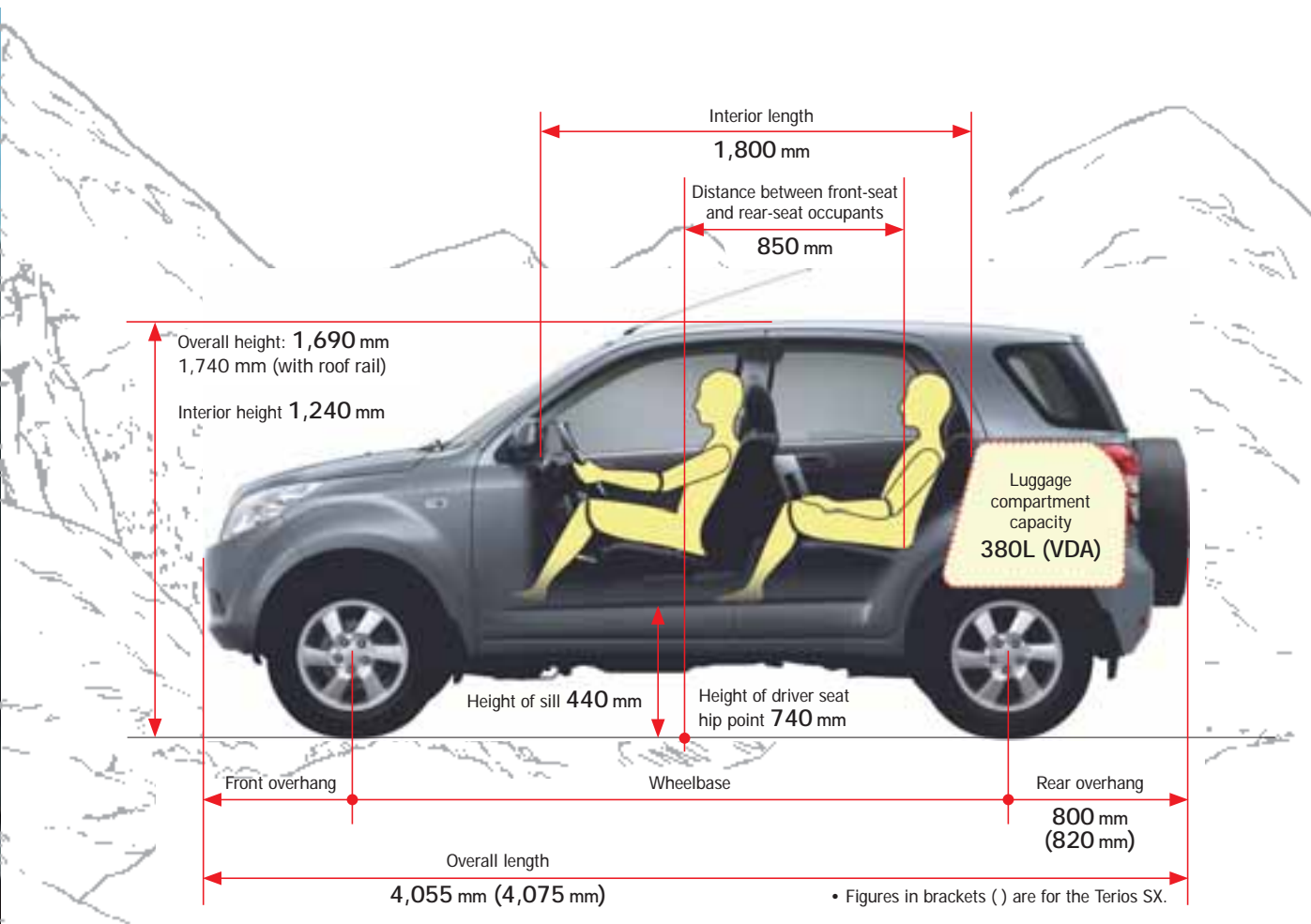


Outside air temperature



Height above sea level





Spacious Interior

A 700mm distance between the driver's seat and the passenger seat means there's plenty of room for two adults to sit in comfort. Furthermore, the driver's seat hip point is 740mm above the ground. This has two benefits. Firstly, the driver is high enough off the ground to gain good visibility, with a large 36.7 degree vertical viewing angle. Secondly, the height of the front seats ensures that it is easy to get in and out.

The Terios can transport plenty of luggage and equipment, even with 5 adults on board. The seats can be configured several ways depending on your cargo carrying needs.

The 60:40 split rear seat with fold-and-tumble mechanism gives versatility for all load configurations. Fold down one split rear seat to carry long items or fold and stow the rear seat, creating a flat floor luggage compartment that's big enough for a 26-inch mountain bike. The rear seats are also fitted with a reclining mechanism as standard.



The new Terios has an abundance of storage areas:



Rear door pockets



Utility box for driver



Sunglasses holder



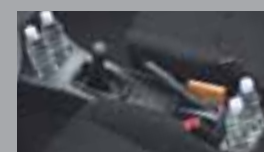
Seat back pockets



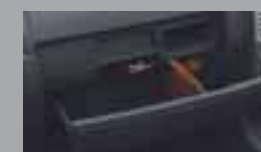
Two secret boxes for valuables



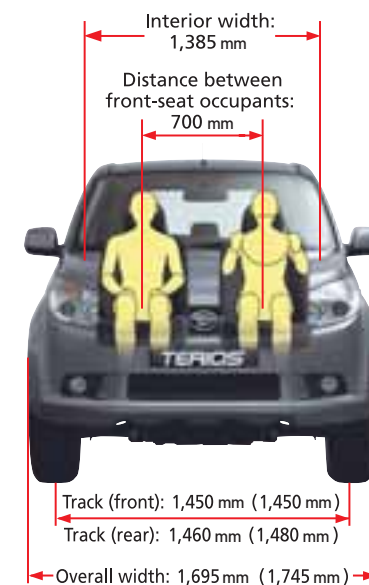
Front door pockets with bottle holder



Floor console with two bottle holders in front and another two in



Glove box which is lockable and illuminated on the SX and SE Automatic





Terios SX
(with optional wheel cover)



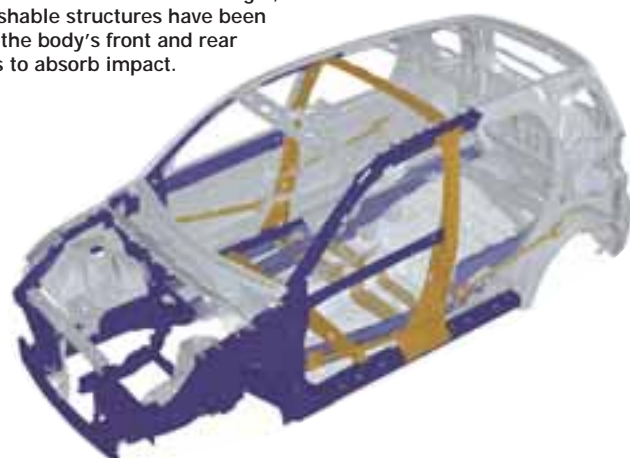
At the top of the centre console is the visible warning display with safety belt not on indicators, passenger airbag off and a security indicator lamp.



Cut-off switch for the front passenger airbag.



The cabin has been made extra rigid, and crushable structures have been used in the body's front and rear sections to absorb impact.



Safety

Safety is a major factor in the development of every vehicle in the Daihatsu range. The new Terios takes this commitment to new heights.

With its advanced permanent 4-wheel drive system, you're guaranteed a safe and secure drive in almost any conditions. So whether it's slippery roads, steep climbs or descents, snow and ice or a torrential downpour, the Terios takes everything in its stride to give you a safe and fun driving experience. Its 4-wheel drive system also features a lockable centre differential – so in the unlikely event that you need extra traction, you've got it.

This exceptional control extends to stopping too.

An anti-lock braking system prevents the wheels locking during emergency braking, allowing you to change direction if necessary. Another common problem when braking in an emergency is that while pressure may be applied quickly enough to the brake pedal, insufficient strength is exerted. A system called Brake Assist ensures that in an emergency situation the braking power is automatically increased, enabling the effects of ABS to be fully realised even by those drivers who are slightly built. An Electronic Brakeforce Distribution system (EBD) is also standard on the Terios. This controls the braking power for the front and rear wheels based on the vehicle's load. Whether carrying passengers, luggage or both, the EBD will distribute braking power evenly to all wheels – keeping the vehicle's direction firmly and completely under your control.

An impact can't always be avoided. But it can be planned for.

The Terios takes crash safety design a step further with a structure that disperses the impact energy from a collision throughout the body. Repeated vehicle-to-vehicle crash tests were conducted using vehicles of different sizes and weights to come up with a design that provides maximum protection to the occupants of both vehicles. This 'mutual-safety-compatible structure' has been adopted in the Terios together with the Impact Detecting Fuel Cut-Off System which reduces the possibility of further danger should an impact occur. Furthermore, the body structure of the new Terios is also designed to minimise the impact to a pedestrian's head and legs in the event of an accident.

You'll find equal attention to safety detail inside.

The Terios is fitted with dual SRS airbags for the driver and front passenger, plus SRS side airbags (a cut-off switch for the front passenger seat airbag is provided). The three-point ELR front seatbelts are equipped with pre-tensioners and force limiters. In the event of a strong impact from the front, the pre-tensioner improves restraint by instantly winding the seat belt to take up any slack. The force limiter helps prevent injury by limiting the amount of pressure the seat belt applies to the chest. When the driver or passenger seat belt is not properly secured, a warning light appears and a buzzer sounds to alert you to this potential danger. And those with a family will be pleased to hear that the rear seats have ISOFIX anchorage points for two child seats.



Terios SX



S

Models

There are 3 exciting models to choose from – the Terios S with air conditioning and electric windows, together with remote central locking and reverse parking sensors all included in the specification.

Want a little more – then look at the Terios SX. Alloy wheels with wider tyres complete with two-tone wheel arch extensions and side skirts*. Need to carry luggage on the roof? The SX has roof rails just to make life a bit easier. And to see in the worst weather conditions multi-reflector quad headlights and front fog lights ensure maximum visibility at all times. Colour keyed door handles and electric heated door mirrors plus darkened privacy glass just complete the look outside. Whilst inside, other finishing touches give you all you need for that added feeling of luxury.

Don't want manual transmission? Want an automatic? Then look no further than the SE Automatic. The same high specification levels as the SX but with different alloy wheels and tyres. No wheel arch extensions but colour keyed side skirts for that sporty appearance.

Now you are spoilt for choice.

* SX wheel arch extensions and side skirts are silver metallic on the grey metallic body colour, and grey metallic on all other body colours.



SX

Colours

Red



Grey Metallic



Silver Metallic



Black Mica Metallic



Blue Mica Metallic



Standard Equipment

The new Terios is loaded with an extensive range of standard equipment. Just look at everything that is included. Few other cars come close to matching the level of equipment that the Terios offers as standard, but that doesn't mean you can't personalise your new Terios with a choice of stylish finishing touches. Just ask your Daihatsu dealer for more details of our accessory range.

style & sound	S	SX	SE Auto
16" Alloy wheels 5 spoke	—	●	—
16" Alloy wheels 6 spoke	—	—	●
16" Alloy full-size spare	—	●	●
16" Steel wheels with wheel trims	●	—	—
16" Steel full-size spare	●	—	—
235/60 R16 tyres	—	●	—
215/65 R16 tyres	●	—	●
Body coloured bumpers	●	●	●
Two-tone wheel arch extensions and side skirts	—	●	—
Body colour side skirts	—	—	●
Black front grille with chrome surround	—	●	●
Grey front grille	●	—	—
Black electric door mirrors	●	—	—
Body coloured electric heated door mirrors	—	●	●
Body coloured door handles	—	●	●
Black window surround	—	●	●
Roof rails	—	●	●
Rear side doors and tailgate – dark tinted privacy glass	—	●	●
Silver painted inner door grip	—	●	●
Silver centre console	●	●	●
Silver instrument surround	—	●	●
Dark grey instrument surround	●	—	—
Integral flush surface RDS radio with single CD player	●	●	●
Roof mounted aerial	●	●	●
Four speakers	●	●	●

climate & vision	S	SX	SE Auto
Air conditioning	●	●	●
Front electric windows (auto down on driver's side)	●	●	●
Rear electric windows	●	●	●
Electric door mirrors	●	●	●
Electric heated door mirrors	—	●	●
Electric windscreen de-icer	—	●	●
Mudguards front and rear	●	—	—
Front fog lights	—	●	●
Multi-reflector quad lamp headlights	—	●	●
Dual lamp headlights	●	—	—
Internal headlamp levelling	●	●	●
Heated rear window	●	●	●
Rear wash wipe with intermittent delay	—	●	●
Rear wash wipe	●	—	—
Front map lights	—	●	●
Luggage light	●	●	●
Rear fog light	●	●	●
Reverse parking sensors	●	●	●



comfort & equipment	S	SX	SE Auto
Driver's seat height, slide and recline adjustment	●	●	●
Reclining 60/40 split rear seats	●	●	●
Luggage hooks	—	●	●
Remote central door locking	●	●	●
Power steering	●	●	●
Centre differential lock	●	●	●
Height adjustable steering column	●	●	●
Leather steering wheel and gear knob	—	●	●
Sunvisors with covered vanity mirrors	●	●	●
Remote fuel flap release	●	●	●
Front 12V power outlet	●	●	●
Rear 12V power outlet	—	●	●
Height adjustable front seatbelts	●	●	●
Multi information display – average fuel consumption, current fuel consumption, driving range, outside temperature and altitude	—	●	●
Digital clock	●	●	●
Tachometer	●	●	●
Low fuel warning light	●	●	●
Lockable illuminated glovebox	—	●	●
Glovebox	●	—	—
Sunglasses holder in overhead console	—	●	●
Front and rear cup holders	●	●	●
Front and rear door storage pockets	●	●	●
Seat back pockets	●	●	●

safety & security	S	SX	SE Auto
Anti-lock braking system with EBD	●	●	●
Twin airbags and side airbags	●	●	●
Passenger airbag de-activation switch	●	●	●
3 x 3-point ELR rear seatbelts	●	●	●
Front and rear height adjustable head restraints	●	●	●
Front seatbelt pre-tensioners with load limiters	●	●	●
Childproof rear door locks	●	●	●
Engine immobiliser	●	●	●
ISOFIX child seat fixings in rear	●	●	●



3 Year Unlimited Mileage Warranty
3 Year Roadside Assistance
6 Year Body Anti-Perforation Warranty

Advanced Engineering

Engine

The new 1.5-litre smart engine was developed to retain the best features of the highly reliable 1.3-litre engine. Smart engineering has ensured that the engine is kept as small as possible giving the benefit of a more compact engine compartment. This minimises the overall length of the car, providing high manoeuvrability without sacrificing interior space.

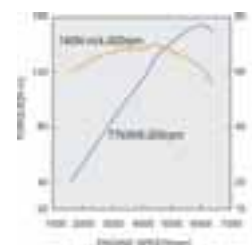
The 1.5-litre engine has more than enough power to provide performance and fuel economy. With a maximum output of 103 bhp at 6000 rpm and maximum torque of 140 Nm at 4400 rpm, the engine delivers ample torque at the low to mid rpm range and smooth, effortless acceleration towards the high rpm range.

Braking performance

The 15-inch front disc brake system ensures outstanding stopping performance. The EBD (Electronic Brakeforce Distribution) technology and ABS (Anti-lock Braking System) with brake-assist distribute the braking force optimally to the four wheels.

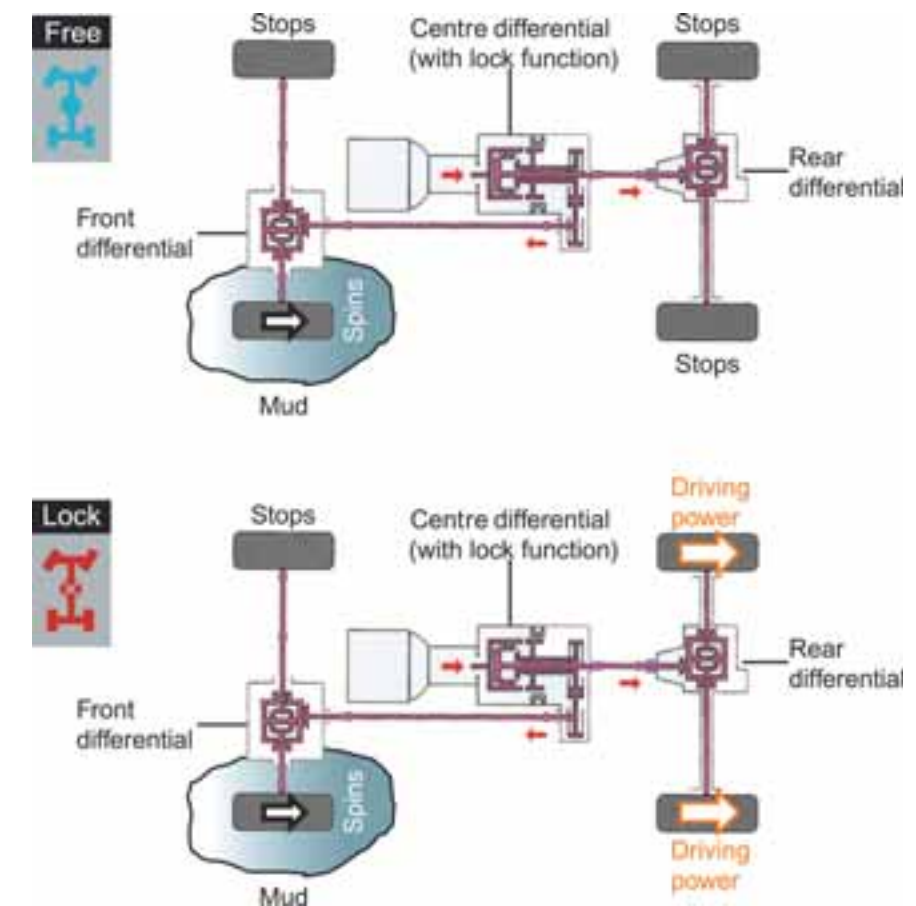
Suspension

The newly developed suspension system gives the Terios outstanding driving stability even when the road gets rough. The suspension was perfected through repeated test driving on a variety of road surfaces, resulting in a system that helps minimise fatigue during long distance journeys and improves both riding comfort and driving stability.



Engine: 1495cc, 4 cylinder,
16 valve, DOHC DVVT
Max power: 103bhp (77kW) at 6000rpm
Max Torque: 140Nm at 4400rpm

Terios SE Auto



Full-Time 4WD

Boasting both full-time 4WD and a centre differential lock, the Terios delivers superb performance on rough roads – providing quick acceleration from a standing start and outstanding high-speed stability. The centre differential prevents occurrence of the 'tight corner braking' phenomenon – a condition in which the difference in rotational speeds between the front and rear wheels causes a braking effect. In thick mud or on a deeply rutted road, just press the button to switch on the centre differential lock. This connects the front and rear wheels directly, giving the vehicle better traction.



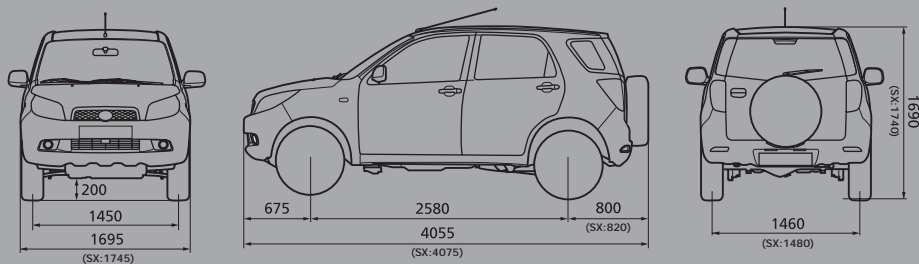
Technical Specification

Engine	
Engine Type – Petrol	4 cylinder in-line 16 valve DOHC DVVT
Capacity (cc)	1495
Max power (bhp @ rpm)	103 @ 6000
Max torque (Nm @ rpm)	140 @ 4400
Bore / Stroke (mm)	72.0 x 91.8
Fuel system	electronic fuel injection
Emission control	Euro IV

Transmission	
Manual	5-speed
Automatic	4-speed
Four wheel drive system with centre differential lock	Permanent 4WD

Seats	
Seats	5

Dimensions (mm)	S	SX	SE Auto
Overall length	4055	4075	4055
Overall width	1695	1745	1695
Overall height	1690	1740	1740
Front overhang	675	675	675
Rear overhang	800	820	800
Wheelbase	2580	2580	2580
Track (front)	1450	1450	1450
Track (rear)	1460	1480	1460
Ground clearance	190	190	190
Wading depth	700	700	700
Turning circle (tyre)	9.8	10.0	9.8
Turning circle (body)	10.4	10.6	10.4
Width of boot	1290	1290	1290
Boot floor length	745	745	745
Luggage area volume to windowline – seats up (litres)	380	380	380
Luggage area volume to windowline – seats folded (litres)	778	778	778
Luggage compartment floor height	640	640	640



Angles (degrees)	
Angle of approach	38
Angle of departure	37
Ramp break over angle	24

Weight	S	SX	SE Auto
Kerb weight	1170	1190	1200
Gross vehicle weight	1720	1720	1720
Maximum roof load weight	50	50	50

Max towing weights (kg)	
Trailer with brakes	1350
Trailer without brakes	400
Maximum nose weight	55

Suspension & brakes	
Front suspension	Independent McPherson struts with coil springs
Front anti-roll bar	Standard
Rear suspension	5 link rigid axle with coil springs
Rear anti-roll bar	Standard
Steering system	Rack and pinion with hydraulic power assistance
Front brakes	15" disc brakes
Rear brakes	Drum

Wheels	S	SX	SE Auto
Wheels	Steel 16x6J	Alloy 16x6.5J	Alloy 16x6J
Tyres	215/65R16	235/60 R16	215/65R16

Performance	S	SX	SE Auto
Maximum speed (mph)	99	99	93
Acceleration, seconds (0-62 mph)	12.4	12.6	14.0

Fuel consumption (mpg)	S	SX	SE Auto
Urban	29.1	28.8	26.4
Extra urban	40.4	39.8	39.8
Combined	35.8	34.9	33.2

Fuel consumption (litres/100km)	S	SX	SE Auto
Urban	9.7	9.8	10.7
Extra urban	7.0	7.1	7.1
Combined	7.9	8.1	8.5
CO ₂ (g/km)	186	191	201
Fuel tank capacity (litres)	50	50	50